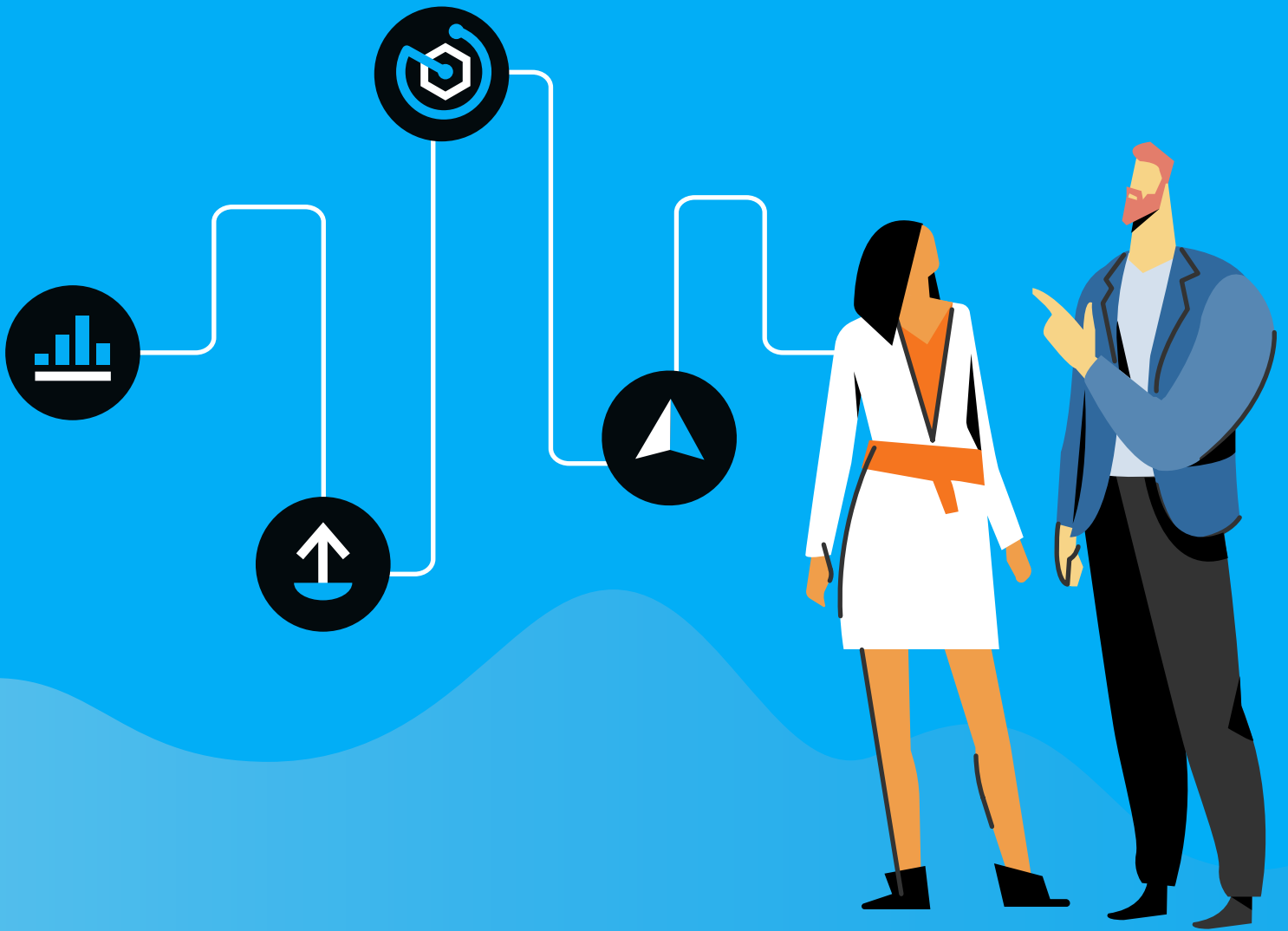


PLUTORA

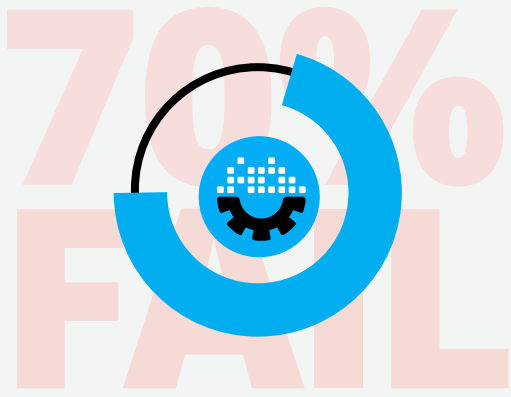


PRODUCT BRIEF



Plutora Platform

Value Stream Management



Research by McKinsey shows that 70 percent of complex, large-scale transformations don't reach their stated goals. Enterprises need the new, holistic approach of value stream management to successfully manage transformations.

Source: "Survey: How to beat the transformation odds," April 2015, McKinsey.com

The digital transformation to Agile + DevOps is more than a technology upgrade

Enterprises struggle when their DevOps transition looks like a normal IT project

Seventy-percent of digital transformation programs fail. The common fatal flaw in these programs is straightforward - overemphasizing the role of technology. DevOps, though enabled by technology, is rooted in culture and process. Software quality will not skyrocket simply because a CI/CD pipeline is set up. Digital transformation strategies that center objectives around technologies like CI/CD are at risk of failure. In successful digital transformations, objectives stem from processes and their improvement metrics. In this way, organizations can incrementally transition to be able to manage

loosely coupled teams in decentralized development.

Specialized IT Practitioners

DevOps teams usually adopt a collection of best-of-breed solutions for their toolchain. This series of point solutions, while high performing, create another common pitfall of digital transformations - data silos. Within the toolchain, work visibility becomes limited to these silos. Without work visibility, managing processes, tracking work, and measuring outcomes requires a web of spreadsheets and meetings. When software delivery is accelerated, these manual processes are easily overwhelmed, leaving managers unable to make data-driven decisions.

Value stream management (VSM) makes work visible

An application's value stream is every step in the process that takes a product feature from 'concept to cash.' Every application has a unique value stream, making it a fundamental metric in understanding how current IT processes create value.

VSM optimizes these value streams individually and as an entire portfolio to progress an organization's digital strategy with every release. This is made possible by real-time direct measurements of work within and across value streams. Advanced analytics and predictive AI features deliver this information in customized dashboards to users across the IT organization.

The work visibility and process control of VSM enables teams to implement small local or global changes and measure the outcomes. These iterations fuel a culture of continuous improvement from developers to front-line managers to IT leaders by promoting data-driven decision making. While every organization's digital solution is unique, this iterative process is essential to a successful, agile approach to digital transformation.

Every application has a unique value stream, making it a fundamental metric in understanding how current IT processes create value. VSM optimizes these value streams individually and as an entire portfolio to progress an organization's digital strategy with every release.



VALUE STREAM MANAGEMENT PLATFORM

DECISION-MAKING & ANALYTICS

Value Stream Mapping

Deep Analytics &
Comparative Metrics

AI-Powered Predictive Insights

Audit & Governance

Pipeline Oversight & Traceability

Real-Time Collaboration

MANAGEMENT & ORCHESTRATION

Release Management &
Pipeline Orchestration

Hybrid Environment
Management

Deployment Management &
Orchestration

INTEGRATION & COMMON DATA MODEL

Tool Integrations

Normalized Data Model

Converged Toolchains

The Plutora VSM Platform

Plutora's innovative VSM platform converges toolchains throughout a portfolio into one bi-directional data pipeline, making work visible across the IT organization. The VSM platform then guides an organization's digital transformation with its centralized management of IT processes and real-time analysis of work data.

Integration & Common Data Model

Plutora directly integrates with today's best-of-breed tools across the software delivery lifecycle. Integrations also incorporate existing business rules, supporting even the most complex systems.

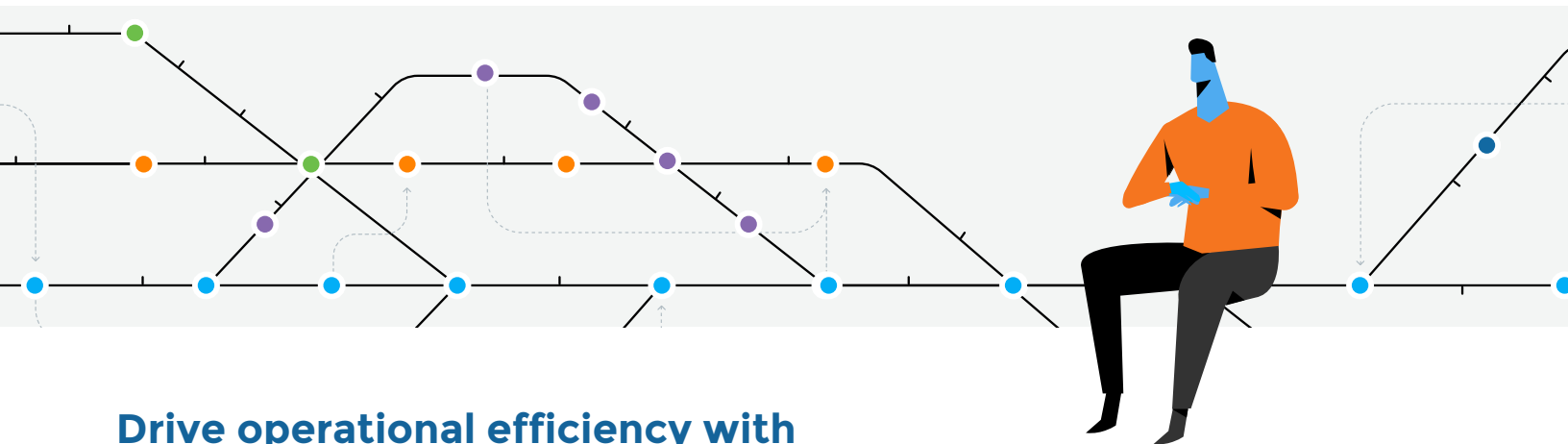
The Common Data Model includes standardized elements to incorporate any software delivery lifecycle. Every data point throughout the portfolio is mapped to the Common Data Model, bringing together and standardizing independent methodologies and disparate tools.

Decision Making & Analytics

Data-driven decision making is what moves your digital transformation toward your strategy objectives with every release. Deep analytics deliver visualizations and reports for process metrics from an individual release to portfolio trends. The platform's AI-powered predictive insights inform decision making by enabling the impact of process changes before implementation. Plutora also provides completely traceable audits of every release

and environment change to identify the root cause of any issue in specific areas.

Executing portfolio-wide decisions is easy with oversight capabilities. These include governance requirements, release plan standards, and pipeline coordination. Further, Plutora facilitates real-time collaboration to ensure stakeholder alignment at process milestones using RACI workflows.



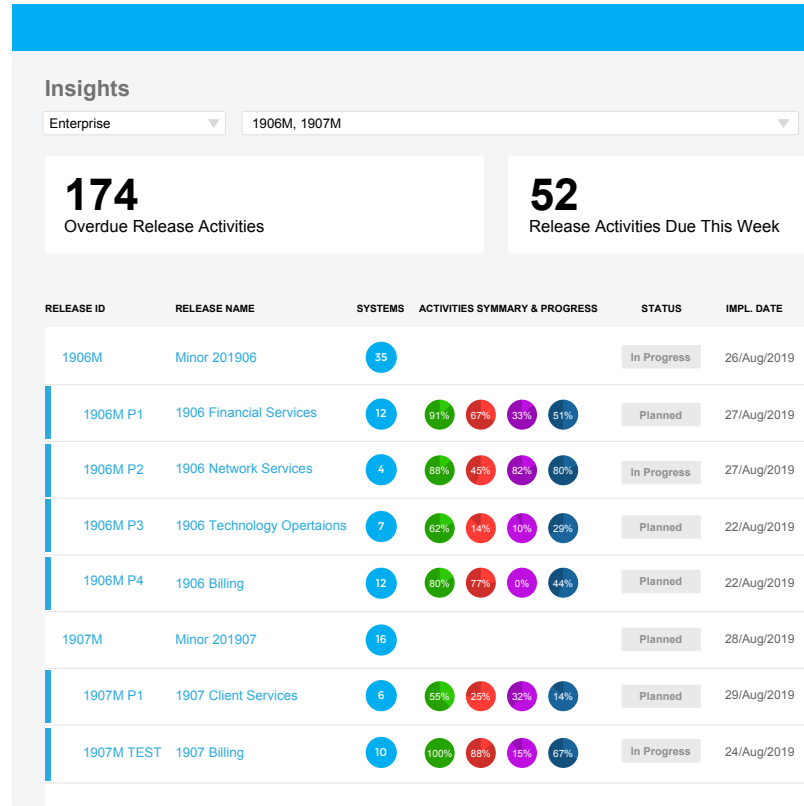
Drive operational efficiency with management & orchestration

The Management & Orchestration module enables enterprises to streamline operations and execute events with real-time activity tracking and analytics for releases, hybrid environments, and deployments. Each component defines workflows, facilitates risk management, and creates traceable audits of processes to improve with each effort.

- 1 **Release Management & Pipeline Orchestration**
- 2 **Hybrid Environment Management**
- 3 **Deployment Management & Orchestration**

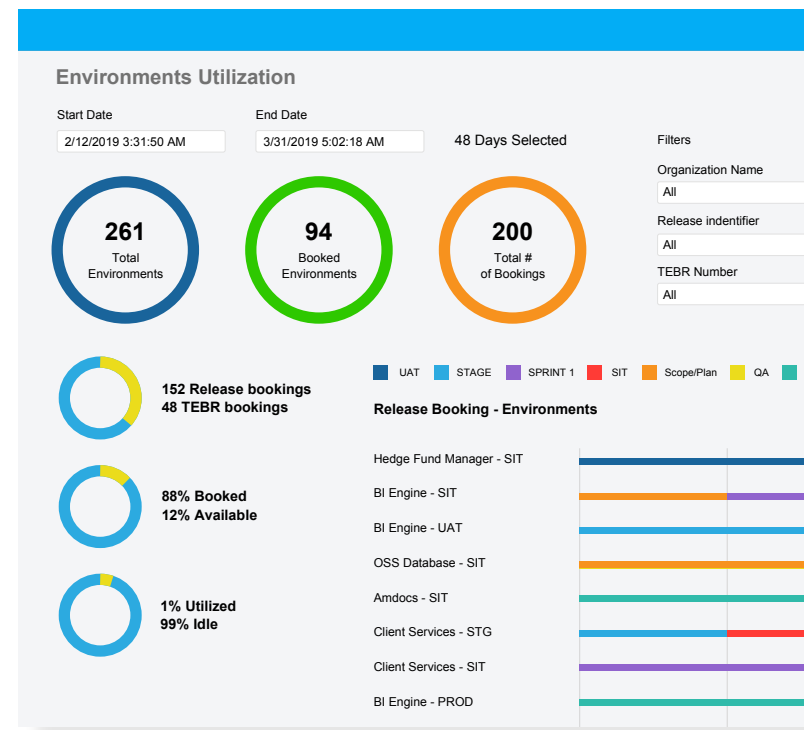
Release Management & Pipeline Orchestration

Standardize release processes within every federated team and across all development. Plutora's templated release plans use task automation and RACI criteria gates to increase predictability and efficiency. The platform's centralized scheduling and release scoping easily align releases to business priorities and IT resources. During release execution, pipeline activities can be monitored in real-time, minimizing the manual effort needed to coordinate complex release activities.



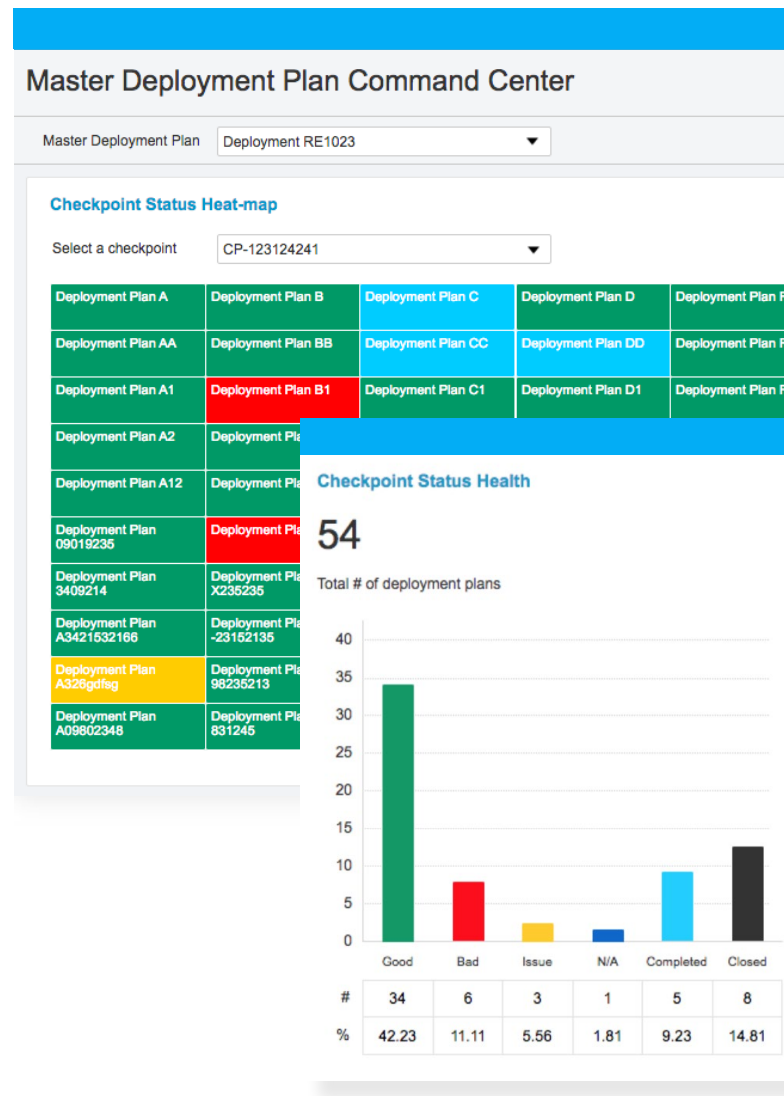
Hybrid Environment Management

Save IT teams development and test time with every release. Consolidate hybrid cloud, physical, and virtual environment management in Plutora. The platform allows users to view all code versions, change histories, and environment activity in a central repository. With defined workflows, IT teams can also establish self-service scheduling and configuration requests. This helps ensure that builds are tested in the correct environments, which in turn increases release quality.



Deployment Management & Orchestration

Go-live, or cutover, events have always been stressful in enterprises. With release package deployments full of release units that need to be coordinated impeccably, these events can drag on into the night and weekend. Plutora ends that. Using Plutora's deployment plans that capture the required manual and automated activities, team members simply track go-live event progress in real-time. Independent teams are able to act with certainty, improving efficiency and reducing the risk of failure.



About Plutora

Plutora, the market leader of value stream management solutions for enterprise IT, improves the speed and quality of software creation by capturing, visualizing and analyzing critical indicators of every aspect of the delivery process. Plutora orchestrates release pipelines across a diverse ecosystem of development methodologies, manages hybrid test environments, correlates data from existing toolchains, and incorporates test metrics gathered at every step. The Plutora

Platform ensures organizational alignment of software development with business strategy and provides visibility, analytics and a system of insights into the entire value stream, guiding continuous improvement through the measured results of each effort.

PLUTORA

Learn more: www.plutora.com

Email: contact@plutora.com